

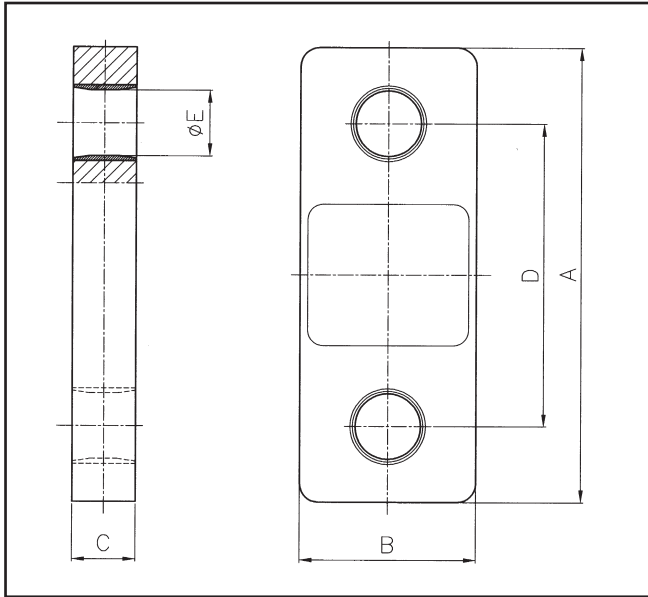
Wireless Load Cell / Load Link with Readout Instrument



Lightweight Load Cell made from High Tensile Alloy
Capacities from 5000 kg to 200 000 kg



Force Measurement & Crane Safety Solutions



Wireless Transmitter	Specification
Power Supply Load Cell	2 x AAA Alkaline Life: 40 hrs continuous 1.5 years standby
Power Supply Handheld Unit	2 x AA Batteries (3v) Life: 50 hrs continuous 1.5 years standby
Bridge Excitation	5 Vdc
Bridge Resistance	>350Ω
Reading Rate	2.5 /second
Input Range	0.2 to 2.5 mV/V
Non-Linearity	<0.01 % Full Scale
Temp. Range	-20 to 60 °C
Zero Tempco	0.2 μVolts/°C typ.
Span Tempco	<30 ppm/°C
Radio Power	10mW
Radio Freq.	2.4 GHz
Range	200m direct line of sight
Standard Functions	
On/Off Switch	
Input Range Selector	
Overload Warning	at R.C. x 105%

Type	LW-5	LW-10	LW-20	LW-50	LW-100	LW-200
Capacity - WLL (kg)	5000	10 000	20 000	50 000	100 000	200 000
Weight (kg)	1.6	3.0	5.0	12.0	27.0	65.0
Resolution	0.000	0.000	0.00	0.00	0.00	0.00
Safety Factor - S.F.	4 times WLL					
Display	8-Digit 9 mm LCD					
Unit (one)	kg, tonne (metric ton), kN, dN, N, lb x 1000 or lb					
Max Deviation	+/- 0.5 % of Applied Load					
Protection Class	IP65 (Load Cell and handheld unit)					
Dimension A (mm)	250	290	320	410	540	690
Dimension B (mm)	95	101	127	152	210	310
Dimension C (mm)	35	50	55	75	120	145
Dimension D (mm)	170	180	200	250	320	396
Dimension E (mm)	30	48	55	76	100	135
Readout Instr. Dim	Type: LI-500 Dim.: Height = 152 mm Width = 90 mm Depth = 35 mm					



GIGASENSE AB • Stationsvägen 16
 SE - 18450 Åkersberga • SWEDEN
 Phone: +46 (0)8 540 839 00 • e-mail: info@gigasense.se
 webb: www.gigasense.se

