

Tipo di attacco Kind of attachment							Dimensioni Dimensions						Coppia serraggio Tightening torque	Peso Weight		
Numero di golfari Number of pieces		1	2	2	2	4										
Angolo Angle		0°	0°/45°	90°	0°/45°	0°/45°										
Tipo Type	Misura Size	Passo Pitch	Portata kg WLL kg					D mm	F mm	G mm	H mm	L mm	R mm	S mm	Nm	g
AGOLFMX06	M6	1	90	60	45	-	-	8	20	-	36	13	6	20	3,5	50
AGOLFMX08	M8	1,25	200	200	200	140	300	8	20	36	36	13	6	20	8	60
AGOLFMX10	M10	1,5	400	400	400	280	600	10	25	45	45	17	8	25	10	120
AGOLFMX12	M12	1,75	600	600	600	420	900	12	30	53	54	20,5	10	30	17	180
AGOLFMX14	M14	2	1000	1000	1000	700	1500	12	30	53	54	20,5	10	30	27	190
AGOLFMX16	M16	2	1200	1200	1200	840	1800	14	35	62	63	27	12	35	42	280
AGOLFMX20	M20	2,5	2000	2000	2000	1400	3000	16	40	71	72	30	14	40	83	440
AGOLFMX24	M24	3	2700	2700	2700	1900	4050	20	50	90	90	36	18	50	120	740
AGOLFMX30	M30	3,5	4000	4000	4000	2800	6000	24	60	109	108	45	22	65	180	1660

**DIN 580 XM**

Golfare maschio

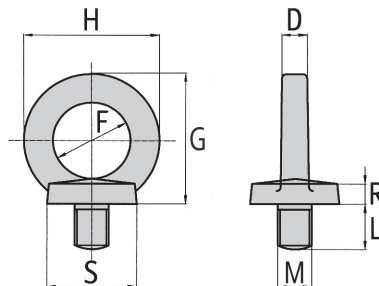
Acciaio inossidabile AISI 316

Temperatura di lavoro: -40°C ÷ 200°C

Male eye bolt

AISI 316 stainless steel

Operating temperature: -40°C ÷ 200°C



Tipo di attacco Kind of attachment							Dimensioni Dimensions						Coppia serraggio Tightening torque	Peso Weight	
Numero di golfari Number of pieces		1	2	2	2	4									
Angolo Angle		0°	0°/45°	90°	0°/45°	0°/45°									
Tipo Type	Misura Size	Passo Pitch	Portata kg WLL kg					D mm	F mm	G mm	H mm	R mm	S mm	Nm	g
AGOLFFX06	M6	1	90	60	45	-	-	8	20	-	36	8,5	20	3,5	50
AGOLFFX08	M8	1,25	200	200	200	140	300	8	20	36	36	8,5	20	8	60
AGOLFFX10	M10	1,5	400	400	400	280	600	10	25	45	45	10	25	10	100
AGOLFFX12	M12	1,75	600	600	600	420	900	12	30	53	54	11	30	17	160
AGOLFFX14	M14	2	1000	1000	1000	700	1500	12	30	53	54	11	30	27	160
AGOLFFX16	M16	2	1200	1200	1200	840	1800	14	35	62	63	13	35	42	240
AGOLFFX20	M20	2,5	2000	2000	2000	1400	3000	16	40	71	72	16	40	83	380
AGOLFFX24	M24	3	2700	2700	2700	1900	4050	20	50	90	90	20	50	120	720
AGOLFFX30	M30	3,5	4000	4000	4000	2800	6000	24	60	109	108	22	65	180	1320

**DIN 582 XF**

Golfare femmina

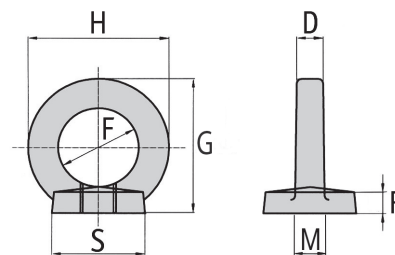
Acciaio inossidabile AISI 316

Temperatura di lavoro: -40°C ÷ 200°C

Female eye nut

AISI 316 stainless steel

Operating temperature: -40°C ÷ 200°C



Coefficiente di sicurezza ≤ M6:4 / ≥ M8:6.

Safety factor ≤ M6:4 / ≥ M8:6.