

ELECTRIC WINCHES MOTORBOX® FROM 150 TO 500 KG

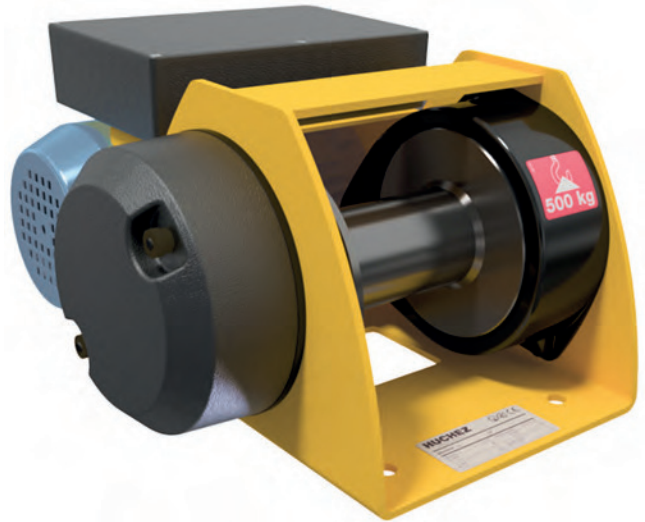


CE - EC REGULATIONS (2006/42/EC):
Emergency stop is obligatory for all electric winches. When lifting, an electric winch or installation, must include in any case: a limit switch device, and from 1000 kg: a load limiter.

- Electric winches designed for simple lifting and pulling operations, ideal for replacing a manual winch.
- Occasional use.
- Maintenance (chandeliers...).
- Moving doors or hatches...

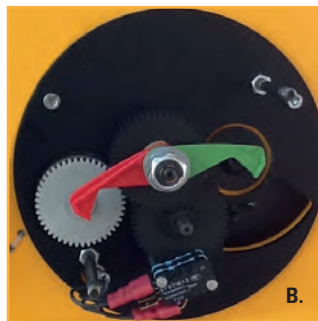
▲ Technical properties

- 2 versions:
 - > direct control, used only with weather protection,
 - > or low voltage control (24 V), assuring user protection against electric risks.
- Mechanical parts machined and protected by cathoporesis.
- Mechanical welded steel drum.
- Reducer in oil bath with helical gears.
- Reduction system fully protected by metal or plastic cover, ensuring perfect safety on providing maximum safety.
- Same attachments as the manual winches MANIBOX GR 150, 300 and 500 kg.
- Single phase 230 V motor brake with permanent capacitor 50 Hz lifting type.
- Class F. Protection IP 44 (model 150 kg) and IP 54 (model 300 and 500 kg).
- Updown control box and emergency stop (2 m long).
- Standard limit switch.
- Motor power adapted to all uses, even domestic use.
- Optional protective cover: Contact us (cf. p.59-65).



▲ Motorbox 500 kg BT

▲ Strong points



A. Prevention of musculoskeletal disorders. The motorized manual winch: The solution to replace your manual winch at a reasonable cost!

B. Very easy to adjust and extremely reliable limit switch, specially designed by HUCHEZ.

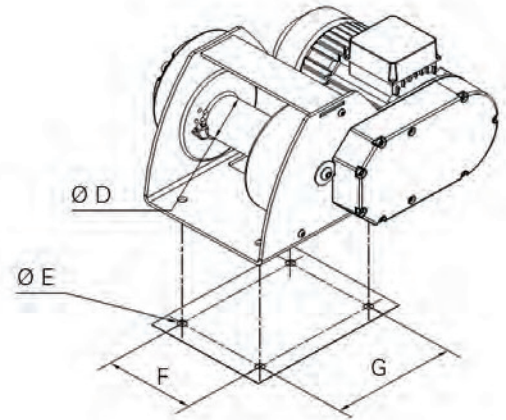
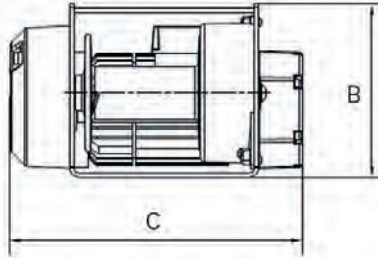
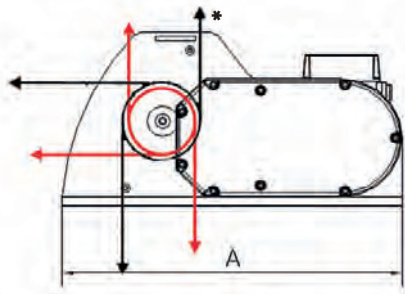
C. Mountings identical to those of the MANIBOX GR 150, 300 or 500 winches to facilitate replacement.

D. MOTORBOX 150 kg. High compactness.

E. MOTORBOX with belt.

ELECTRIC WINCHES MOTORBOX® FROM 150 TO 500 KG

Dimensions



— Motorbox 150 kg (* only for CD version)

— Motorbox 300/500 kg

Models	Motorbox 150 CD	Motorbox 150 BT	Motorbox 300 CD	Motorbox 300 BT	Motorbox 500 CD	Motorbox 500 BT
A mm	310	340	390	424	390	424
B mm	179	210	205	216	205	216
C mm	281	281	341	341	341	341
Ø D mm	54	54	63.5	63.5	63.5	63.5
Ø E mm	9	9	13	13	13	13
F mm	114	114	144	144	144	144
G mm	154	154	200	200	200	200

Applications



1. Opening a door.



2. Pulling a plate on a press.



3. A Motorbox in an industrial site.

Technical characteristics

References	Motorbox 150 CD 6	Motorbox 150 BT 6	Motorbox 300 CD 5	Motorbox 300 BT 5	Motorbox 500 CD 3	Motorbox 500 BT 3
Capacity 1st layer kg	150	150	300	300	500	500
Capacity top layer kg	150	150	300	300	500	500
Nb of layers	3	3	3	3	3	3
Wire rope cap. 1st layer m*	4	4	4	4	4	4
Wire rope cap. top layer m*	15	15	16	16	13.5	13.5
Wire rope Ø mm	4	4	5	5	6	6
Speed 1st layer m/mn	5.5	5.5	4.6	4.6	2.6	2.6
Speed top layer m/mn	7	7	5.9	5.9	3.6	3.6
FEM	1Dm	1Dm	1Dm	1Dm	1Dm	1Dm
Motor kW	0.25	0.25	0.37	0.37	0.37	0.37
Power	1Ph-230 V	1Ph-230V	1Ph - 230 V	1PH-230V	1Ph - 230 V	1Ph-230V
Weight (without wire rope) kg	14	16	27	29	27	29

The indicated rope diameter corresponds to the capacity on the top layer with a safety coefficient equal to (about) 5 when lifting with non-rotating rope.

* Rope and hook extra (see p.88 to 91).