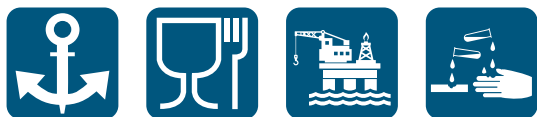


# TRBOXTER COMPACT WINCHES FROM 250 TO 990 KG - STAINLESS STEEL RANGE



**NEW**

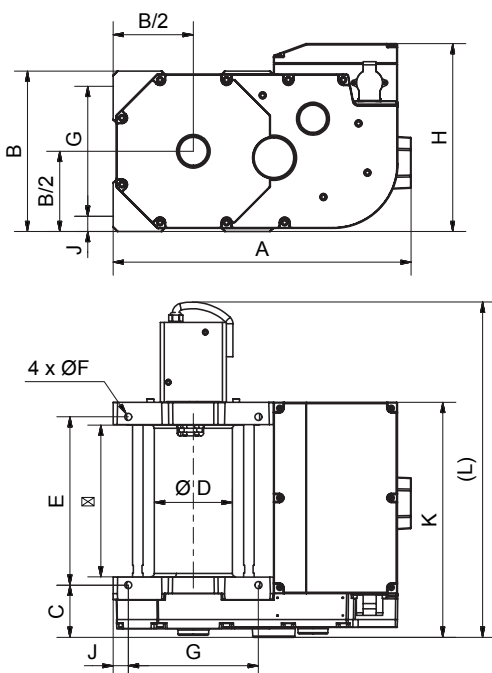
- Range of electric winches designed for simple lifting and pulling applications in a corrosive environment.
- Ideal in harsh environments: offshore, marine, chemical and food industries.



## Technical properties

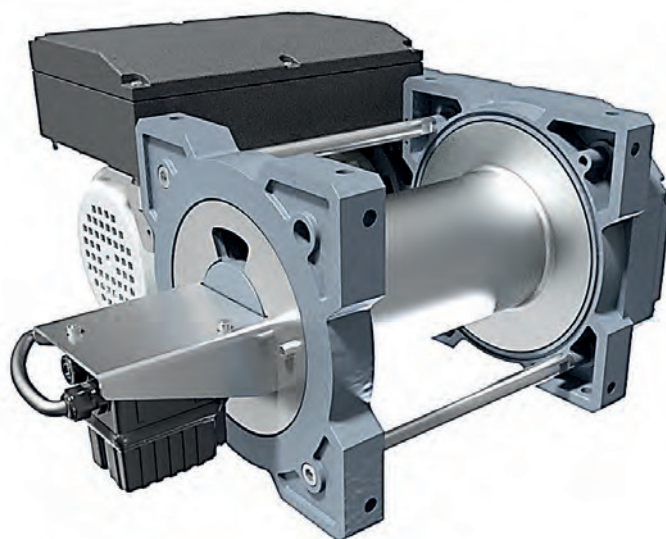
- Stainless steel drum (316 L).
- Very low voltage control ensuring user protection against electric risks.
- Aluminium casing (coated with marine paint C4).
- Up-down pendant control with emergency stop, cable 3 m long.
- 230 V, 50 Hz - Brake single-phase lifting, P = 1.1 kW-type motor. Isolation class F. IP 66.
- Three-phase motor brake 230 /400 V - 50 Hz lifting type, P = 1.1 kW. Isolation class F. IP 66.
- Reducer in oil bath with helical gears.
- Mechanically welded drum with wide flanges for allowing a secure fastening of the wire rope.
- Lengthened drum on request.
- Limit switch IP 66/67 in option.
- Rope press roll, rope slack switch and grooved drum on request.
- Many adaptable options (contact us).

## Dimensions



Models	TRBoxter 250 / 500	TRBoxter 750 / 1000
A	452*	540*
B	243	304
C	79	107.5
Ø D	118	140-150
E	255	318
Ø F	10.5	12.5
G	197	246
H	284.5	332.5
J	23	29
K*	356*	456*
L**	(545)	(608)
T	230	290

\* Can vary depending on the type of the engine  
\*\* with limit switch option



TRBOXTER INOX range  
for harsh environments

## Technical characteristics

References	TRBOXTER INOX		TRBOXTER INOX		TRBOXTER INOX		TRBOXTER INOX	
	251	253	501	503	751	753	991	993
	BT20		BT10		BT5		BT5	
<b>Capacity 1st layer kg</b>	300		500		900		990	
Capacity top layer (kg)	250		500		750		990	
No. of layers	3		3		3		3	
Wire rope capacity 1st layer m*	15		11		15		13	
Wire rope cap. on sup. layer m*	54		40		53		48	
Wire rope Ø mm	5		7		9		10	
Speed 1st layer m/mn	19		10		5.5		4	
Speed top layer m/mn	22		12		6.5		5	
FEM	1Am		1Bm		1Am		1Bm	
Motor kW	1.1		1.1		1.1		1.1	
Power supply	1 Ph - 230 V	3 Ph - 230/400 V	1 Ph - 230 V	3 Ph - 230/400 V	1 Ph - 230 V	3 Ph - 230/400 V	1 Ph - 230 V	3 Ph - 230/400 V
Weight (without wire rope) kg	55		55		95		95	

\* Rope and hook extra (see p. 88 to 91).