

HAND SPURGEAR WINCH TIREX 150 AND 300 KG



CE – Comply with Machines Directive 2006/42/EC. Developed and manufactured in accordance with standard NF E N 13157.

- Flat position.
- Indoor - Outdoor.
- Trailers, masts.
- Lifting doors.
- Opening of traps...

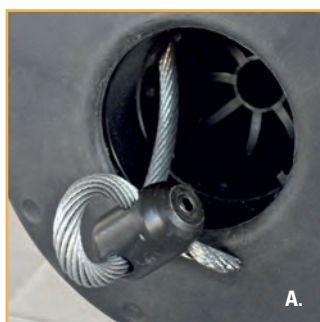
Technical properties

- A new generation, compact winch taking advantage of the qualities of composite materials and aluminium, especially their anti-corrosion properties.
- Easy to wind. Planetary reducer in a sealed casing.
- Disengageable drum, no load only, associated with a failsafe system in the rope wind direction (patented).
- Zinc-plated steel (standard model) or stainless steel mounting plate.
- Automatic brake.
- Stainless steel spring and pawls.
- Removable crank.
- Ergonomically and comfortably shaped crank grip.
- Many possibilities of wire rope exit (over 250°).
- High force/compact and density ratio.
- Operating temperature between -10°C and +50°C.

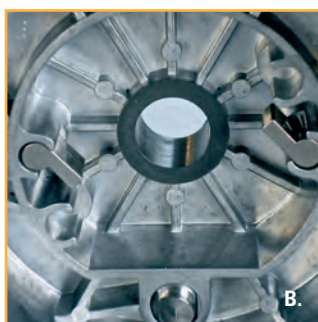


► Tirex

Strong points



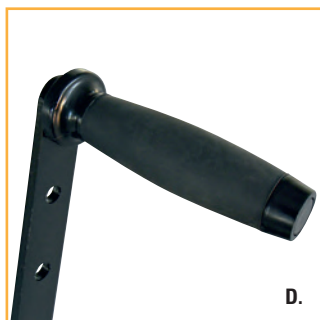
A.



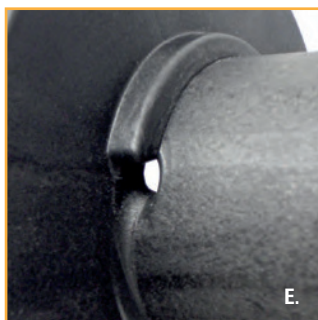
B.



C.



D.



E.

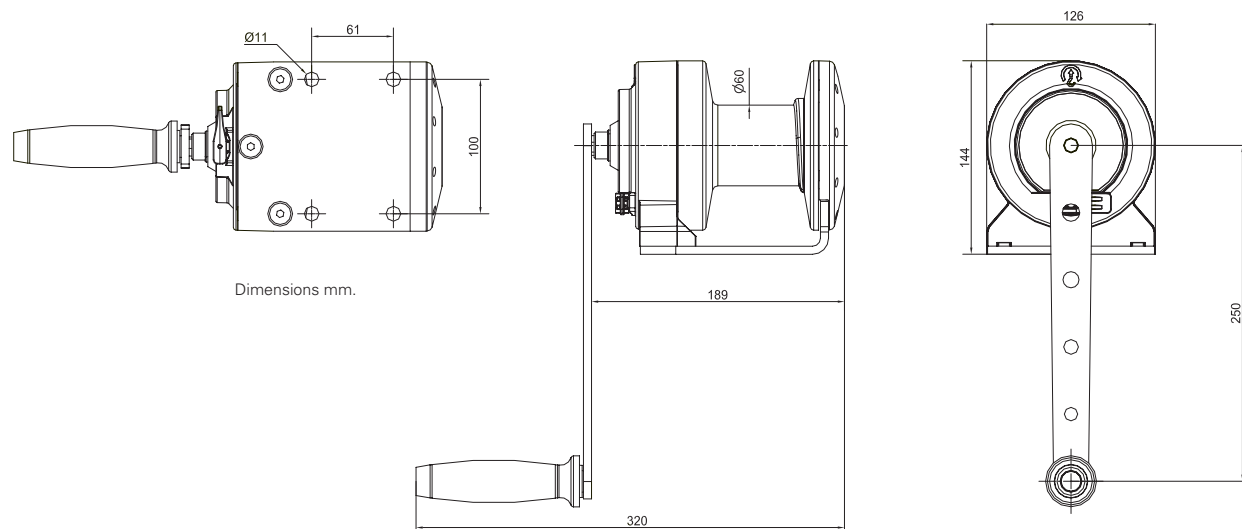


F.

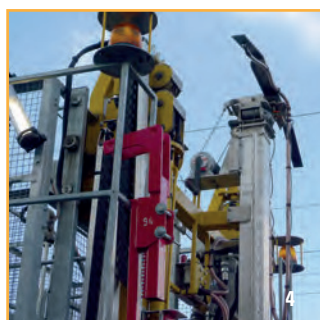
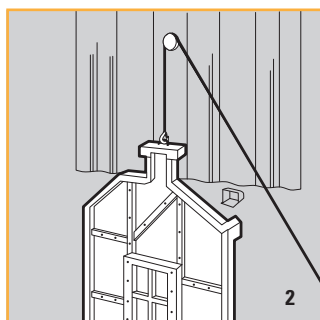
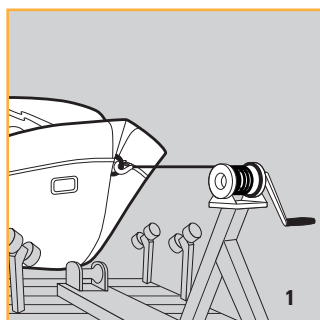
- A. Accessible, very safe self-tightening rope attachment.
- B. Maximum safety: 2 ratchets.
- C. Clutch release impossible when loaded.
- D. « Soft touch » ergonomic crank grip in two materials.
- E. Rope guide for correct winding.
- F. Gear system with satellite pinions offering excellent mechanical balance and reducing the effort required on the crank.

HAND SPURGEAR WINCH TIREX 150 AND 300 KG

Dimensions



Applications



1. Moving a boat.
2. Handling scenery.
3. Tirez installed on a loading arm.
4. Installation of a grounding mast for a SNCF cradle.
5. Tirez installed on an anchor bracket. Lifting material.

Technical characteristics

References	TIREX 150	TIREX 300
Capacity 1st layer kg	250	400
Capacity top layer kg	150	300
Nb of layers	6	3
Wire rope cap. 1st layer m*	2.5	2
Wire rope cap. top layer m*	24	8.5
Wire rope Ø mm	4	5
Lift per crank revolution mm	40	41
Max. hand force on crank kg	8	14
Weight (without rope) kg	3.7	3.7

The indicated rope diameter corresponds to the capacity on the top layer with a safety coefficient equal to (about) 5 when lifting with non-rotating rope.
* Rope and hook extra (see p.88 to 91).