

TIPO ASKTAFAS

ASKTAFAS TYPE

The ASKTAFAS quick coupling is preferred to the wedge lug because it guarantees an efficiency equal to 100% of the rope breaking load.

The assembly / disassembly of the cylindrical terminal applied to the fixed end is more practical, safe and fast when used on mobile cranes, construction and port cranes to increase or decrease the rope pulls.

The pin size and fork width make it interchangeable with open wedge socket and spelter socket.

L'attacco rapido ASKTAFAS viene preferito al capocorda a cuneo perché garantisce una efficienza pari al 100% del carico di rottura fune.

Il montaggio/smontaggio del capocorda cilindrico applicato al capo fisso risulta più pratico e rapido, sicuro e veloce quando utilizzato su autogrù, gru edili e portuali per aumentare o diminuire i tiri della fune.

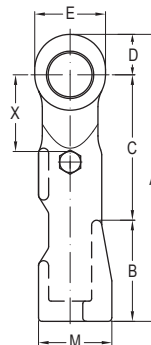
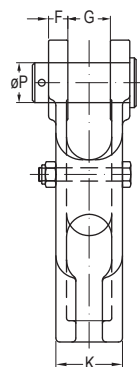
La dimensioni perno e larghezza forcina la rendono intercambiabile con i capicorda autobloccanti e testa fusa.

- Capocorda zincato a caldo.
- Temperatura di impiego: -20°C +200°C.
- Il capocorda deve essere fissato con la spina per evitare rotazioni e fuoriuscita dalla sede.
- Socket: hot dip galvanized.
- Operating temperature: -20°C +200°C.
- The cable terminal must be fixed with the safety pin to prevent rotation and coming out of the seat.

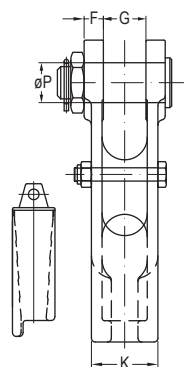
- Capicorda intercambiabili e recuperabili (dopo controllo).
- Campo di applicazione: funi standard a 6 trefoli, funi ad alto carico di rottura e funi antigirevoli.
- Applicazione capicorda con resina poliesteri in accordo alla EN13411-4.
- Grado di efficienza applicazione: 100% forza rottura fune.
- Interchangeable and reusable terminals (after inspection).
- Field of application: standard 6-strand ropes, high tensile strength ropes and non-rotating ropes.
- Application of terminals with polyester resin in accordance with EN13411-4.
- Degree of application efficiency: 100% rope breaking force.



Con coppiglia
With split pin



Con dado
e coppiglia
With bolt
and split pin



DATI TECNICI

TECHNICAL DATA

| Codice Code | Fune Rope | | Carico rottura MBL | Volume resina Approx. resin volume | Dimensioni Dimensions | | | | | | | | | | | | | | Peso Weight |
|----------------|--------------|---------------|--------------------------|---|--------------------------|-----|---------|---------|---------|---------|---------|---------|---------|---------|---------|----------|---------|----------|----------------|
| | Ø mm | Ø inch | | | t | cc | A mm | B mm | C mm | D mm | E mm | F mm | G mm | K mm | M mm | ØP mm | X mm | ØH mm | |
| ASKTAFAS 13 | 11 - 13 | 7/16 - 1/2 | 20 | 35 | 190 | 65 | 97 | 28 | 48 | 12.5 | 26 | 40 | 47 | 25 | 45 | 15 | 70 | 26 | 1.7 |
| ASKTAFAS 16 | 13 - 16 | 1/2 - 5/8 | 25 | 50 | 227 | 80 | 115 | 32 | 56 | 14.5 | 32 | 50 | 58 | 30 | 58 | 19 | 84 | 32 | 2.6 |
| ASKTAFAS 19 | 17 - 19 | 2/3 - 3/4 | 40 | 80 | 260 | 90 | 130 | 40 | 68 | 16.5 | 38 | 60 | 70 | 35 | 64 | 22 | 98 | 39 | 3.9 |
| ASKTAFAS 22 | 20 - 22 | 7/8 | 55 | 125 | 303 | 110 | 145 | 48 | 80 | 20.5 | 45 | 69 | 80 | 41 | 82 | 26.5 | 117 | 45 | 6.7 |
| ASKTAFAS 26 | 23 - 26 | 1 | 80 | 160 | 365 | 125 | 182 | 58 | 98 | 22.5 | 51 | 80 | 93 | 51 | 95 | 29.5 | 138 | 52 | 10.5 |
| ASKTAFAS 28 | 27 - 29 | 1 1/8 | 100 | 210 | 400 | 140 | 195 | 65 | 110 | 25 | 57 | 90 | 104 | 57 | 97 | 33.5 | 157 | 58 | 13.5 |
| ASKTAFAS 32 | 30 - 32 | 1 1/4 | 120 | 350 | 426 | 150 | 205 | 72 | 124 | 28 | 63 | 98 | 111 | 63 | 100 | 36.5 | 170 | 64 | 19 |
| ASKTAFAS 35 | 33 - 36 | 1 3/8 | 130 | 425 | 465 | 170 | 220 | 76 | 132 | 28 | 70 | 102 | 117 | 63 | 110 | 40 | 183 | 68 | 23 |
| ASKTAFAS 38 | 37 - 39 | 1 1/2 | 160 | 500 | 502 | 182 | 240 | 80 | 140 | 30 | 76 | 110 | 125 | 70 | 115 | 43 | 207 | 76 | 41 |
| ASKTAFAS 42 | 40 - 42 | 1 5/8 | 200 | 700 | 550 | 200 | 265 | 85 | 148 | 33 | 76 | 126 | 142 | 76 | 125 | 48 | 230 | 85 | 50 |
| ASKTAFAS 48 | 43 - 48 | 1 3/4 - 1 7/8 | 250 | 1250 | 620 | 225 | 300 | 98 | 170 | 39 | 89 | 140 | 157 | 89 | 135 | 56 | 260 | 95 | 65 |
| ASKTAFAS 52 | 49 - 52 | 2 | 300 | 1425 | 685 | 240 | 335 | 108 | 186 | 46 | 101 | 157 | 175 | 95 | 150 | 60 | 285 | 104 | 80 |